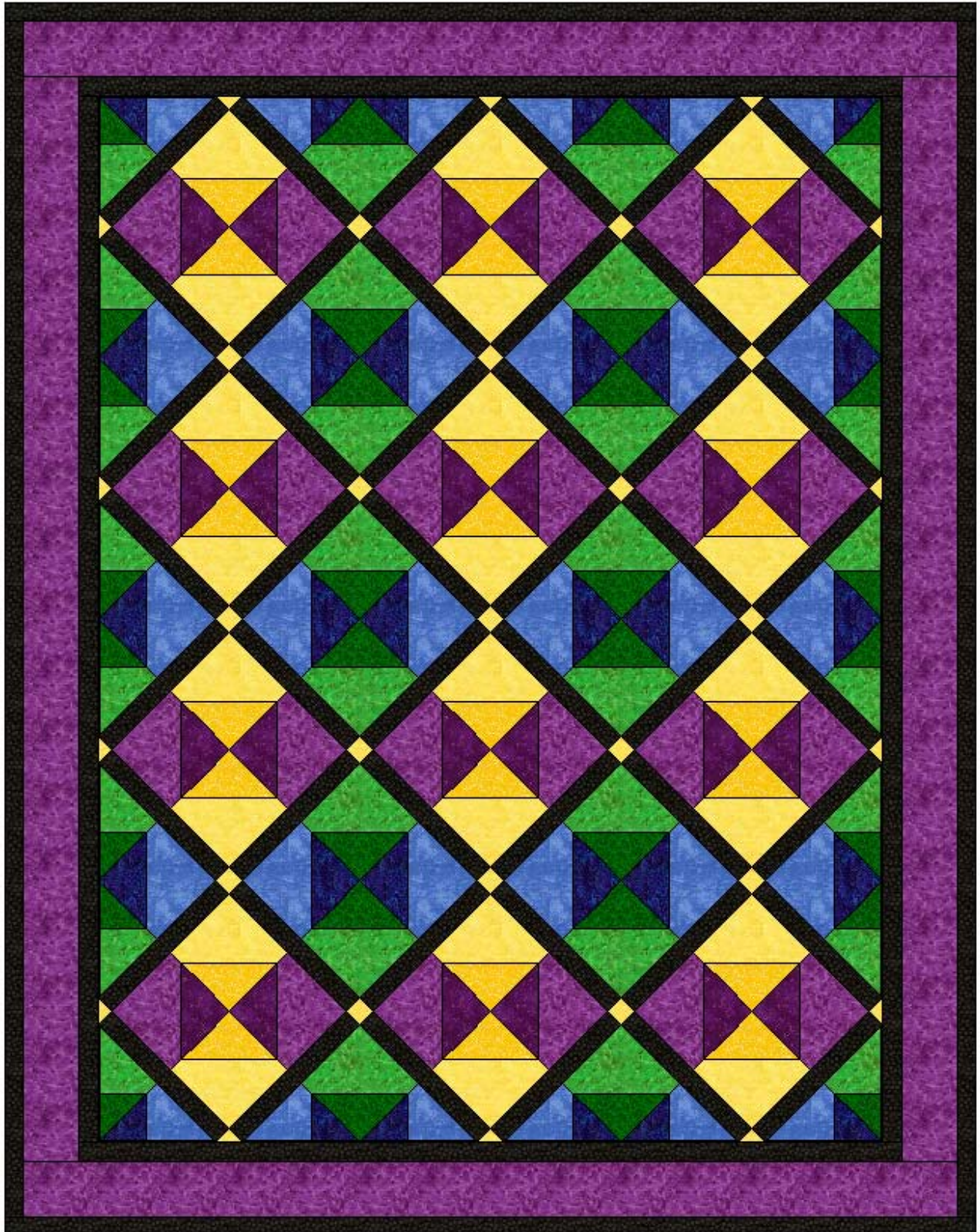


diamond sparkle quilt - a vintage karen gass design

This is one of those quilts that's easier to make than it looks. The directions seem complicated, but they aren't.

The quilt is stunning made up and finished, but unfortunately has been lost.



Basic Instructions for This Quilt

Its easier to cut out all the pieces for each block type (Whole Block, Vertical Half Block, Horizontal Half Block, Corner Block) just prior to assembling them. If you cut out ALL the pieces for the whole quilt, it could get confusing when you assemble the blocks.

I strongly recommend using a design wall to lay out this quilt before assembling the blocks into a top. The placement of the blocks is very important. Please refer to the pattern cover for color placement. A design wall is very simple to make. Hang a piece of flannel on your wall, or use a vinyl tablecloth flannel side out, or a sturdy piece of cotton batting. Cotton quilt fabric will stick to the flannel.

This paragraph important!
All the blocks are paired in colors. The blue ALWAYS goes with the green. The purple ALWAYS goes with the yellow. Don't get them mixed up, it's easy to do! There are Whole Blocks, Vertical Half Blocks, Horizontal Half Blocks and Corner Blocks. Specific directions are given for each block. Each block itself is easy, the color placement is what's different and important.

Cutting directions for whole block

Make (6) of these blocks:

Piece	Color	Measurements
A	Light Green	Template A - Cut 12
A	Light Blue	Template A - Cut 12
B	Dark Green	Cut (6) 5" squares and cut in half diagonally once
B	Dk Blue	Cut (6) 5" squares and cut in half diagonally once

Make (12) of these:

Piece	Color	Measurements
A	Light Purple	Template A
A	Light Yellow	Template A
B	Dk Purple	Cut (6) 5" squares and cut in half diagonally once
B	Dk Yellow	Cut (6) 5" squares and cut in half diagonally once

1. Keep your Med Green/Light Green and Dark Blue/Light Blue pieces together.
2. Keep your Light Purple/Dark Purple and Light Yellow/Gold pieces together.

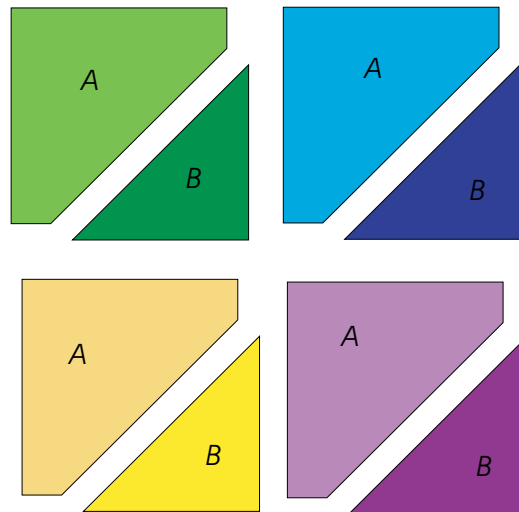


Illustration 1

3. Sew "A" to "B"; in each color group.

NOTE: Blue piece, press seam to the dark. Green piece press seam to the light. Yellow piece, press seam to the dark, Purple piece press seam to the light.

4. Lay out your block on the table as shown. Make sure your B pieces are inside. Blues are opposite each other and Greens are opposite each other. Purples are opposite each other and Yellow's are opposite each other. (see illus. 2)

5. Sew the block together the same way you would sew a 4-patch together. Take care to match seams. Press.

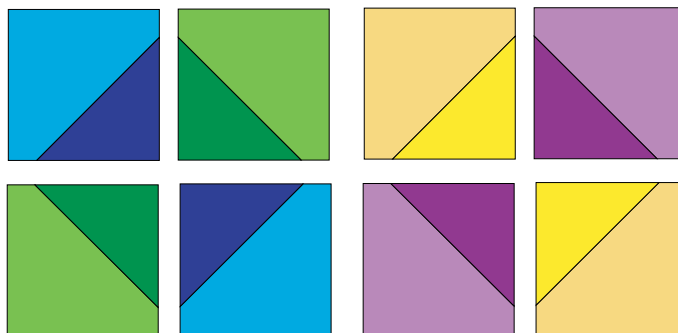


Illustration 2

6. Take finished Whole Blocks and trim to 10 1/2" (see note). Place them on the design wall. Follow the cover photo example and make sure the Blue and Purple colors are horizontal and the Green and Yellow colors are vertical. Color placement is very important.

Note: Don't worry if your Whole Blocks don't measure 10 1/2". Trim them to a consistent size and make note of this size. You will use this measurement when you make your sashing strips.

Cutting directions for Vertical Half Block

Piece	Color	Measurement
A	Light Blue	Cut (6) Template A
B	Dark Blue	Cut (3) 5" squares in half diagonally
C	Light Green	Cut (6) of Template C Cut (6) Template C r
D	Dark Green	Cut (6) 3 7/8" square in half diagonally

Cutting directions for Horizontal Half Block

Piece	Color	Measurement
A	Light Green	Cut (4) Template A
B	Dk Green	Cut (2) 5" squares in half diagonally
C	Light Blue	Cut (4) Template C Cut (4) Template C
D	Dark Blue	Cut (4) 3 7/8" squares in half diagonally

1. Sew Dark Blue Triangle B to Light Blue A.
2. Sew Medium Green Triangle D to Light Green C.
3. Sew Medium Green Triangle D to Light Green CR.
4. Sew Green sections to either side of Blue. (see illus. 3)
5. The C templates are mirror images of each other, be sure to cut one C and one CR for each block.

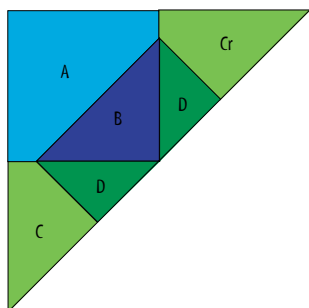


Illustration 3

1. Sew Medium Green Triangle A to Light Green B.
2. Sew Dark Blue D to Light Blue C.
3. Sew Dark Blue D to Light Blue CR.
4. Sew Blue Sections to either side of Green. Again, lay out your pieces on the table before you sew.
5. The C templates are mirror images of each other, be sure to cut one C and one CR for each block.

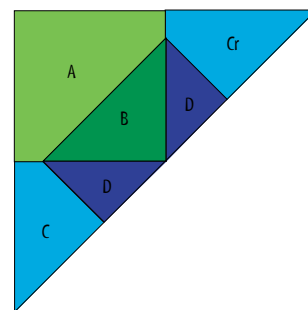


Illustration 4

NOTE: Be careful not to get your Vertical and your Horizontal Half Blocks mixed up!

Cutting directions for Corner Blocks

Piece	Color	Measurement
C	Light Blue	Cut (2) Template C Cut (2) Template Cr
C	Light Green	Cut (2) Template C Cut (2) Template C
D	Dk Blue	Cut (2) 3 7/8" squares in half once diagonally
D	Dk Green	Cut (2) 3 7/8" squares in half once diagonally

1. Sew one Medium Green D to Light Green C.
2. Sew one Medium Green D to Light Green CR
3. Sew one Dark Blue D to Light Blue C.
4. Sew one Dark Blue D to Light Blue CR
5. The C templates are mirror images of each other, be sure to cut one C and one CR for each block. (see illus. 5)
6. Sew the Blue and Green sections together. Lay them on the design wall with the rest of the blocks AND make sure the Blues are horizontal and the Greens are vertical, and that they match up with the blocks already finished. Refer to picture on pattern cover.

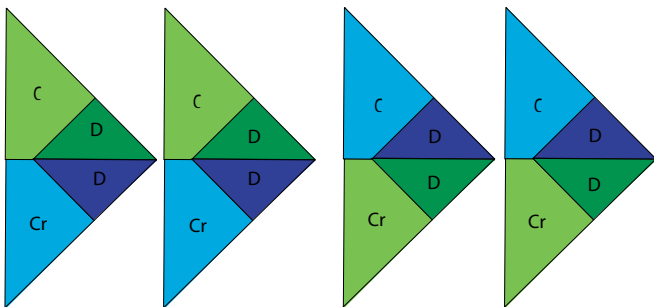


Illustration 5

Sashing

You can add sashing one of two ways; Plain or with Cornerstones. Sashing strips between Whole Blocks, for either sashing style should measure 10 1/2" (or whatever size you trimmed Whole Block – See note under Whole Block Assembly).

Plain Sashing

Cut 1 1/2" strips from Black. With all quilt blocks on the design wall, view them in diagonal rows. (see illus. 6). Sew rows together with short sashing strips between each block. Measure the length of each row. Join and cut sashing strips, as needed, to equal row length plus 2". Join the rows with long pieced sashing strips (see illus. 6). Square quilt top and trim off excess sashing before applying borders.

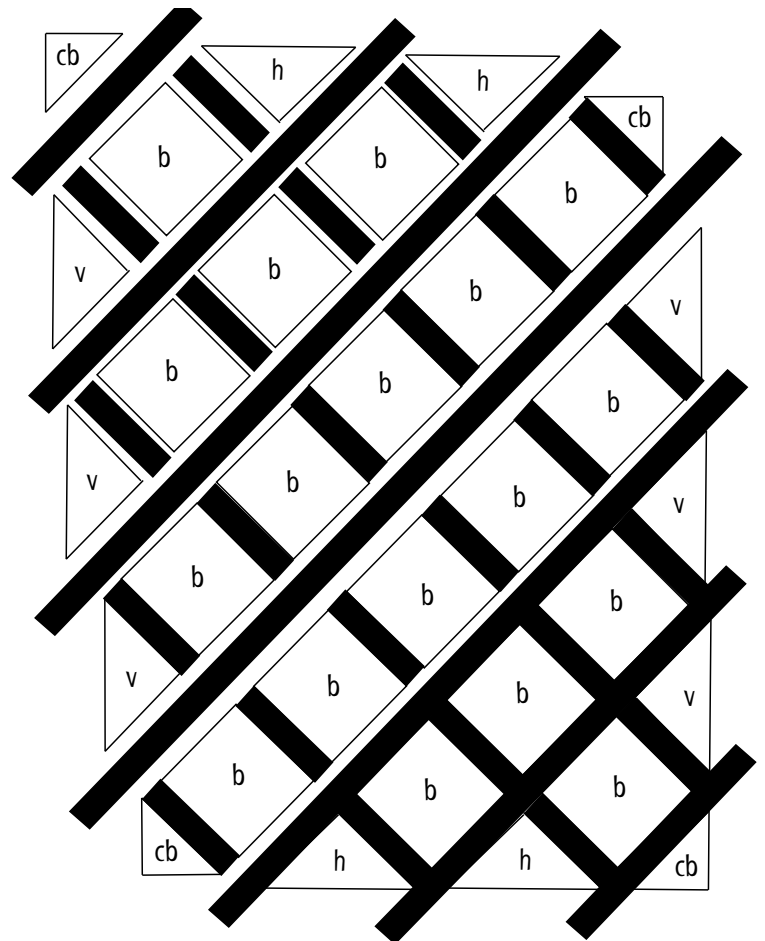


Illustration 6

C-corner block, h-horizontal half block, v-vertical half block, b-whole block, s-sashing

Sashing with Cornerstones

Piece	Color	Measurement
Cornerstones	Gold	Cut (31) 1 1/2" squares
Sashing Strips	Black	Cut (48) 1 1/2" x 10 1/2" (or your block measurement)

Join blocks with sashing strips to form rows. (see illus. 7) There will be rows of block – sashing – block – sashing – block etc.

There will be rows of yellow square – sashing – yellow square – sashing etc. (see illus. 7)

Join cornerstones to sashing strips as shown in illustration. Pin and sew pieced sashing to join rows. Match cornerstones with black sashing between blocks. It is very important that block seams align with each other on either side of the sashing. At the end of each row the outer cornerstones of the sashing strip will 'hang out there!' This square will be trimmed when you square the quilt top before applying borders.

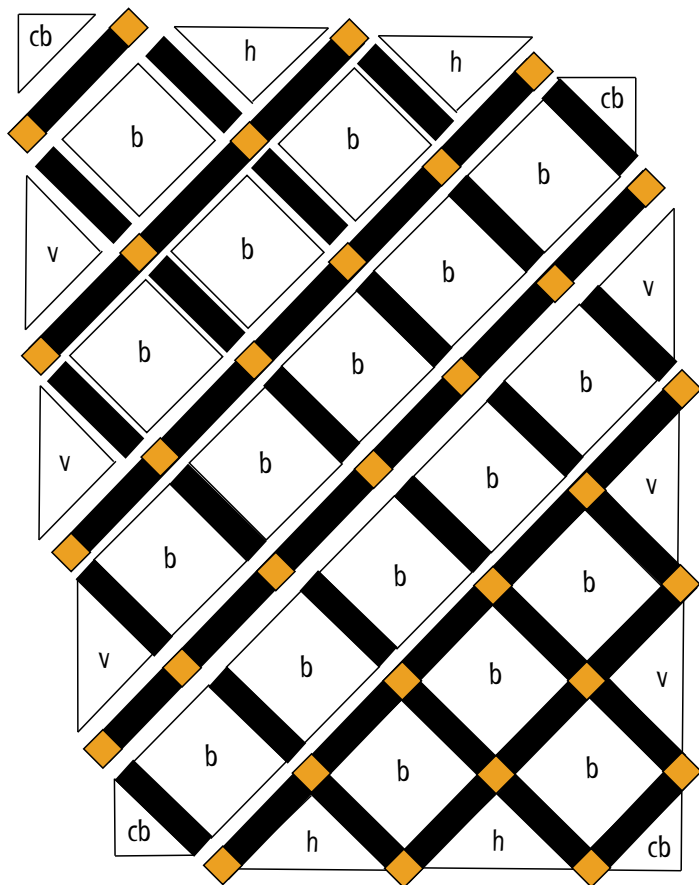


Illustration 7

When you add the outer black border, you'll automatically get a yellow triangle at the end of each row.

Borders

Before applying each border, square the quilt top. Measure sides and top/bottom. Cut and piece border fabric into strips equal with quilt measurements. Sew border strips to each side first, then top/bottom. Repeat for each border.

Piece	Color	Measurements
1st border	Black	1 1/2" by quilt measurements from above
2nd border	Light Purple	3" by quilt measurements from above
3rd border	Black	1 1/2" by quilt measurements from above

Your quilt top is finished, and now its time to layer with batting and backing, quilt and bind. I hope you enjoyed this quilt. I'd love to hear from you and see a picture of the quilt you made.

Visit us at www.cottonspice.com

